

Now with  
Flexible Pads

Slim,  
shape,  
tone!



Best  
Body Sculpting  
Machine

Sapphire  
Lipo-Light  
Maxiflex

# Slim, shape, tone...

Sapphire Lipo-Light is the most advanced body shaping system for Professionals - a natural way to control body shape using Light Therapy plus exercise.

## What is the Sapphire Lipo-Light?

Sapphire Lipo-Light is a light emitting diode (LED) system specifically designed for Professionals to contour the body by losing inches in circumference off specific body areas (waist, hips, thighs, arms, neck). Sapphire Lipo-Light Maxiflex offers up to 6 large flexible silicon pads to maximise comfort and results that are strapped directly to the fatty areas resistant to diet and exercise.

## What is the action mechanism behind the Sapphire Lipo-Light?

The light (635nm) emitted from Sapphire Lipo-Light causes the fat cell membranes to temporarily alter the permeability of the cell. This brief change allows the fat contents to seep out from the cell into the interstitial space from where it can be processed by the lymphatic system.

## What happens to the fat?

After being released, triglycerides are broken down into free fatty acids and glycerol and enter the blood stream. Once in the blood stream, several things may occur:

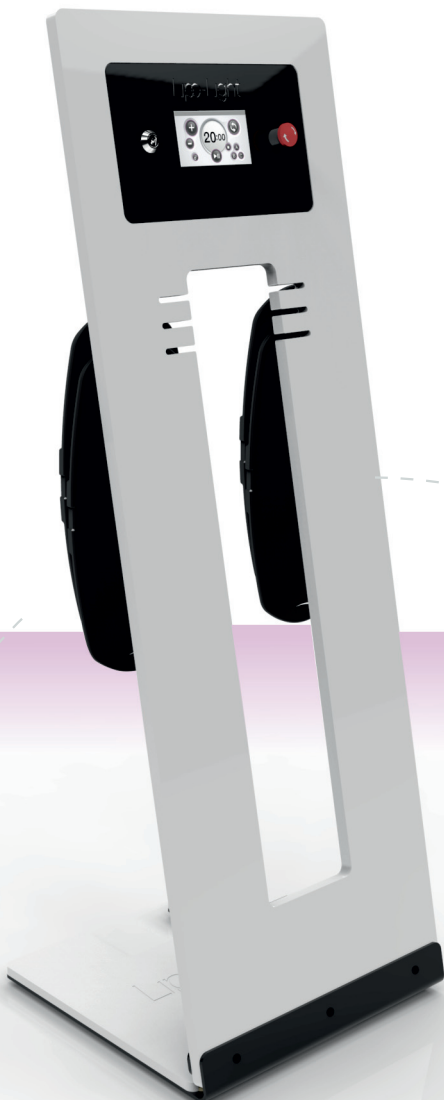
1. Some of the free fatty acids are readily available to be used as fuel by the body during exercise.
2. What is not consumed as energy will get to the liver where it will either be oxidized or re-processed for storage. It is unknown how much gets oxidized versus re-stored, but results suggest that fat does indeed get oxidized (no visible or measurable redistribution of fat in the treated areas).

## What results can I expect?

Individuals have lost anywhere from 50mm to 150mm\* over a course of treatments. To maximise the chances of your clients responding, three things are important:

1. As a rule, most clients are suitable, clients under medication or with any conditions listed in the contra indication guide should consult their doctor before treatment.
2. Hydration is critical. Drink plenty of water (ideally at least 8 glasses of 225ml of water) spread out throughout the day. Diuretics (coffee, alcohol, etc.) are discouraged.
3. The lymphatic system should be mobilized. Post treatment exercise is essential. The client must be encouraged to be active and burn 350 calories every day during their choice of cardio exercise.

\*Individual results vary and are not guaranteed.



Unique  
**FLEXIBLE  
PADDLES**  
Now Available



#### **How deep does Sapphire Lipo-Light affect fat cells?**

Penetration depth is 10 to 12 mm. The Lipo-Light consists of up to 6 large flexible pads containing 112 ultra-bright diodes each.

#### **Who can operate the Sapphire Lipo-Light device?**

Sapphire Lipo-Light can be operated by anyone without the supervision of a medical professional.

#### **How is Sapphire Lipo-Light different than liposuction?**

Liposuction is an invasive procedure involving the mechanical removal of fat cells. By contrast, Sapphire Lipo-Light is completely non-invasive and only affects fat cells temporarily. Sapphire Lipo-Light does not compete with liposuction; it is simply a body shaping option available to clients who do not wish to undergo a surgical procedure.

#### **Does the Sapphire Lipo-Light help with loose skin and cellulite?**

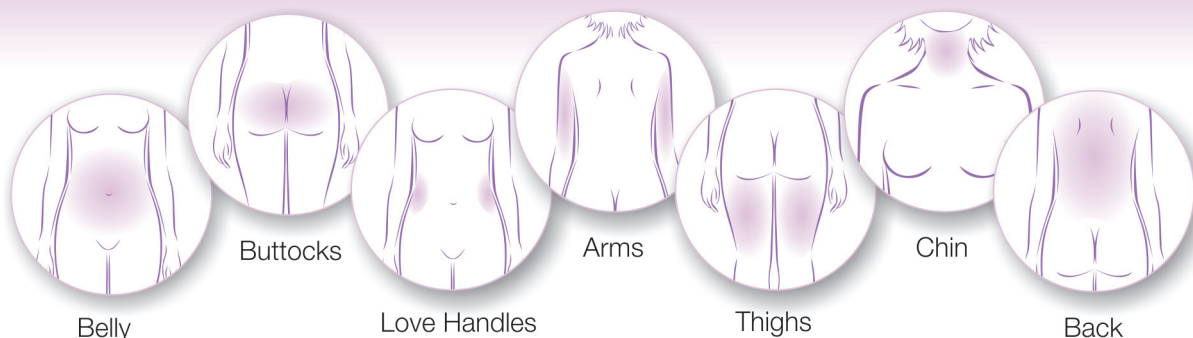
Anecdotal evidence suggests that clients undergoing Sapphire Lipo-Light have noticed an improvement in skin tone, texture and the appearance of cellulite.

## The Benefits

The Sapphire Lipo-Light is simple to use, hygienic, quick and effective. Because the pads remain in place for the duration of the treatment, the practitioner has the flexibility to focus on other treatments with the same or other clients.

Sapphire Lipo-Light is the most cost-effective body sculpting product in its class. The safety of Light Therapy technology makes for ease of operation and the practitioner can be trained to use the device in a relatively short period of time.

Designed and manufactured in the UK, Sapphire Lipo-Light is supported by an international network of distributors, who are able to answer all questions and train practitioners on the use, care and effectiveness of this amazing product.





We just completed a recent promotion that brought in over 150 new patients.

Dr. Douglas L. Weed - Genesis Health Institute

Our patients are experiencing consistently remarkable results.

Ron Ristaino, DC -  
Desert Health & Wellness

Manufactured in the UK



Sapphire  
Lipo-Light  
Maxiflex

Laser SOS Aesthetics Ltd.  
Unit 3 Burrell Road, St Ives, Cambs PE27 3LE United Kingdom  
Tel: +44 (0)1480 409962  
Fax: +44 (0)1480 498860  
e-Mail: [sales@lasersosaesthetics.com](mailto:sales@lasersosaesthetics.com)  
[www.lasersosaesthetics.com](http://www.lasersosaesthetics.com)

A World Class Service from a World Class Company